



A close-up photograph of a black, textured industrial component, likely a pump or valve. The component has a circular logo in the center featuring a stylized 'OLI' logo with a green and red horizontal line. To the right of the logo is a brass-colored threaded port. The background is dark and out of focus.

# **COMPANY & PRODUCT PRESENTATION**

# OLI VIBRA INDUSTRIAL



OLI is the world's top selling manufacturer of Electric and Pneumatic Vibrators.

- 22 OLI Trading Subsidiaries
- 336+ local warehouses
- 600+ employees



# OLI VIBRA INDUSTRIAL - Headquarter



Recently inaugurated, the new headquarter in Medolla (MO) aims to become the managing and development brain of the global group.

The new building, risen after the catastrophic earthquake in 2012, is a flagship of structural engineering and energetic efficiency. It gives room for about 100 employees, 4 production lines, metric room, 2 fully automated warehouses and various machine tools.

# CESENA – THE R&D and CUSTOMER SERVICE

The eBike division of OLI has born in 2015 in Cesena. Here is where the engineers draw the first prototypes, run the first prototypes and set first production line.

Today the plat is the R&D facility for any eBike product. 10 dedicated engineers, two 3D printers, machines tools, a fully working production line and many bikes to test are running every day to develop and put in production new exciting products.

As the team is growing every month, we moved the customer service to a new building. From here, we want to offer the best support to dealers in every language.

A newly built video room will let us offer online training for dealers all around the world.

[PLAY VIDEO](#)



# OLI SUBSIDIARIES AROUND THE WORLD





# A GLOBAL COMPANY

Being part of a big international family, in OLI eBike's future strategy we see the start of production plants everywhere the market needs it.

The first example is the China facility. Here, in our parent company WOLONG, we have the first semi-automated drive units assembly line. To give consistency and ensure the highest quality standards all around the world, a test machine is at the end of every production line. All these machines are calibrated in Cesena – Italy- and shipped to the assembly location.



# PRODUCT OVERVIEW

## DRIVE UNITS



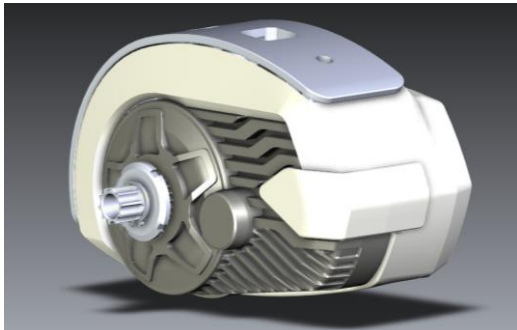
### SPORT PLUS & ONE

- 2 stages
- 85Nm or 58Nm
- Urban/City/Cargo/Trekking
- Proprietary motor bracket



### EDGE

- 3 stages
- 85Nm
- MTB/Enduro/Trekking
- BH gen4 or EP8 motor bracket



### NEW MOVE

- 2 stages
- 58Nm
- Urban/City
- BH gen2-3 motor bracket

## USER'S INTERFACES



### HIGH VISION

- TFT colour display
- Twilight sensor
- Powermeter
- Remote keypad



### SIDE VISION

- LCD colour display
- Compact design
- Lights control



### MATRIX

- Segment display
- Compact design
- Backlight

## BATTERIES



Solutions for every necessity

## ACCESSORIES







eBike Systems

# DRIVE UNITS — SPORT PLUS

# SPORT PLUS – Overview



## TECH DATA

- Rated power: 250W
- 85Nm at 30rpm
- chainline: 52mm
- Q-Factor: 178mm
- Weight: 3,5kg
- Lights management 36V
- Proprietary mounting pattern
- UART communication

[PLAY VIDEO](#)



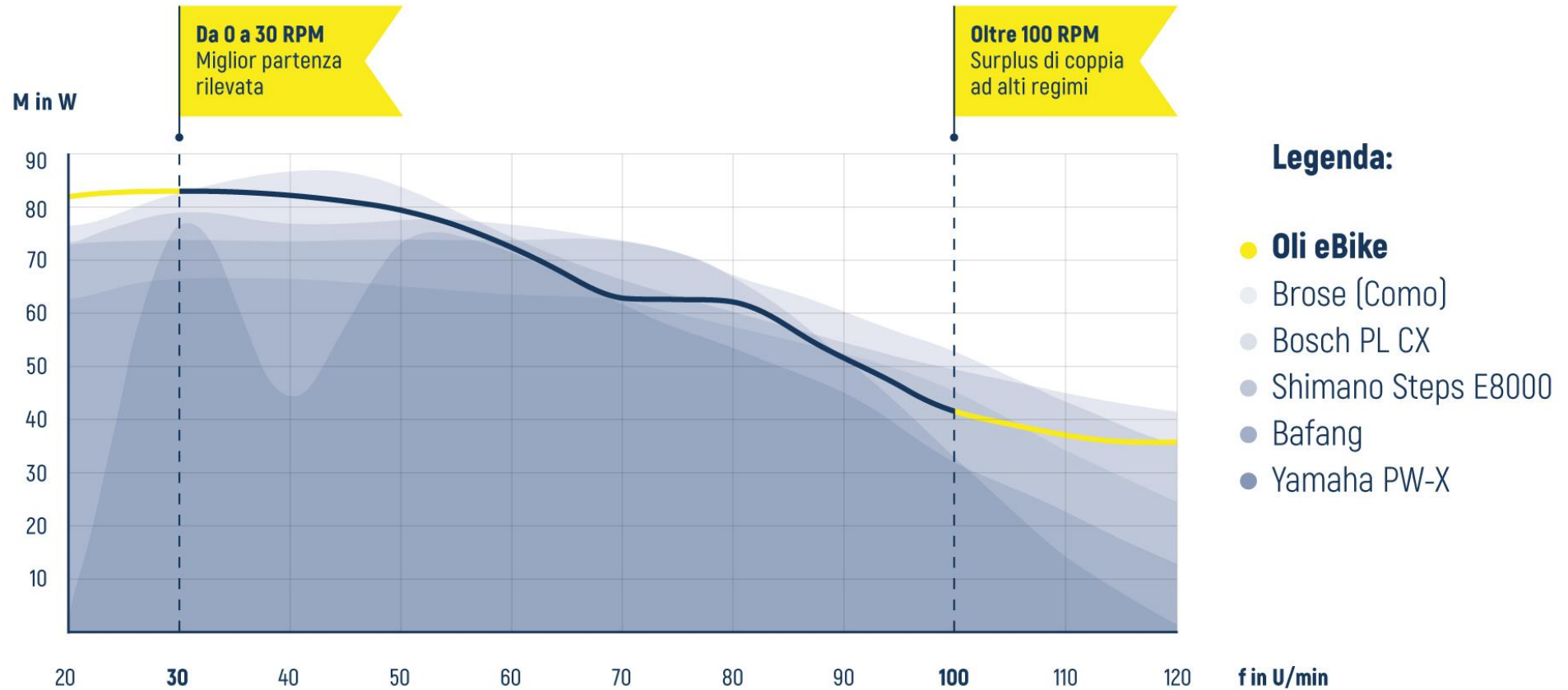
SPORT is a “two stages architecture”, meaning there are two gears between the electric motor and the bottom bracket. This setup ensures a smooth and silent power deliver.

The riding feeling is smooth and predictable

Among competitors it results to be the strongest at low rpm. Still, it remains brilliant at high rpm.

Perfect applications for urban, cargo bikes, trekking and gravel.

# SPORT PLUS – Torque curve



Test performed by Velotech GmbH in 2020





eBike Systems

DRIVE UNITS

-

SPORT ONE

# SPORT ONE – Overview



## THREE DIMENSIONAL LIGHTNESS

A more efficient drive unit permits smaller batteries.

- Lighter weight
- Lighter design
- Lighter price

## TECH DATA

- Rated power: 250W
- 58Nm at 30rpm
- chainline: 52mm
- Q-Factor: 178mm
- Weight: 3,3kg
- Lights management 36V
- Proprietary mounting pattern
- UART communication

To follow our philosophy “*3 dimensional lightness*”, we wanted to create a motor with enough push for every light urban and commuting application, that could be coupled with smaller and lighter batteries.

Same architecture and main body of the PLUS version, but equipped with a smaller rotor-stator assembly.

A carefully tuned electronics manages power delivering a good 58Nm while keeping under control efficiency

# SPORT ONE – Specifications



The SPORT ONE's electric motor is more compact reducing by 7mm the lateral width compared to the SPORT PLUS





# SPORT ONE - Builds



**MBM RAMBLA**



**MBM FUNK URBAN**

MBM is our longest-time partner. Our companies are just few kilometres apart. This proximity has allowed to establish a strong relationship growing together on the international market. Today, MBM exports in all European countries and has established distribution in US, South America and Japan.

MBM has endorsed from day one our philosophy of matching SPORT ONE with smaller batteries on urban and kids' eBikes



eBike Systems

DRIVE UNITS

-

EDGE



# THE EDGE IN PILLS

## PERFORMANCES

- Rated power 250W
- MAX torque: 90Nm @35rpm
- MAX power: 600W @100rpm
- Up to 400% power increase

## ELECTRONICS

- 4 sided torque sensor
- Vectorial electronics
- Dynamic riding modes
- Lights management 36V
- ENVILO and GEARSSENSOR compatibility

## PHYSICAL CHARACTERISTICS

- Weight: 3.2kg
- BH gen4 or EP8 motor bracket
- Highly water and dust resistant
- ISIS crank interface
- BH chainring interface
- ISCG05 mounting points



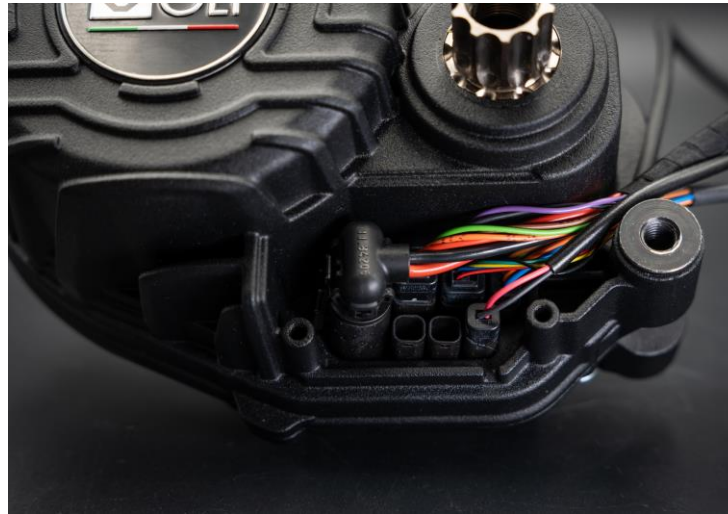
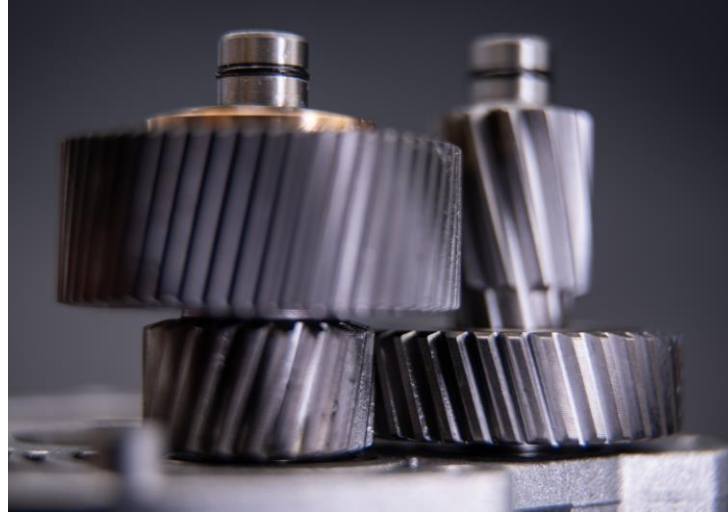
# EDGE - Overview



The EDGE is a **three stages architecture**, meaning there are **three gears between electric motor and pedals**. As consequence, we could **reduce the overall volume**. Perfect match with eMTB with complex frame design and advanced suspension's kinematics.

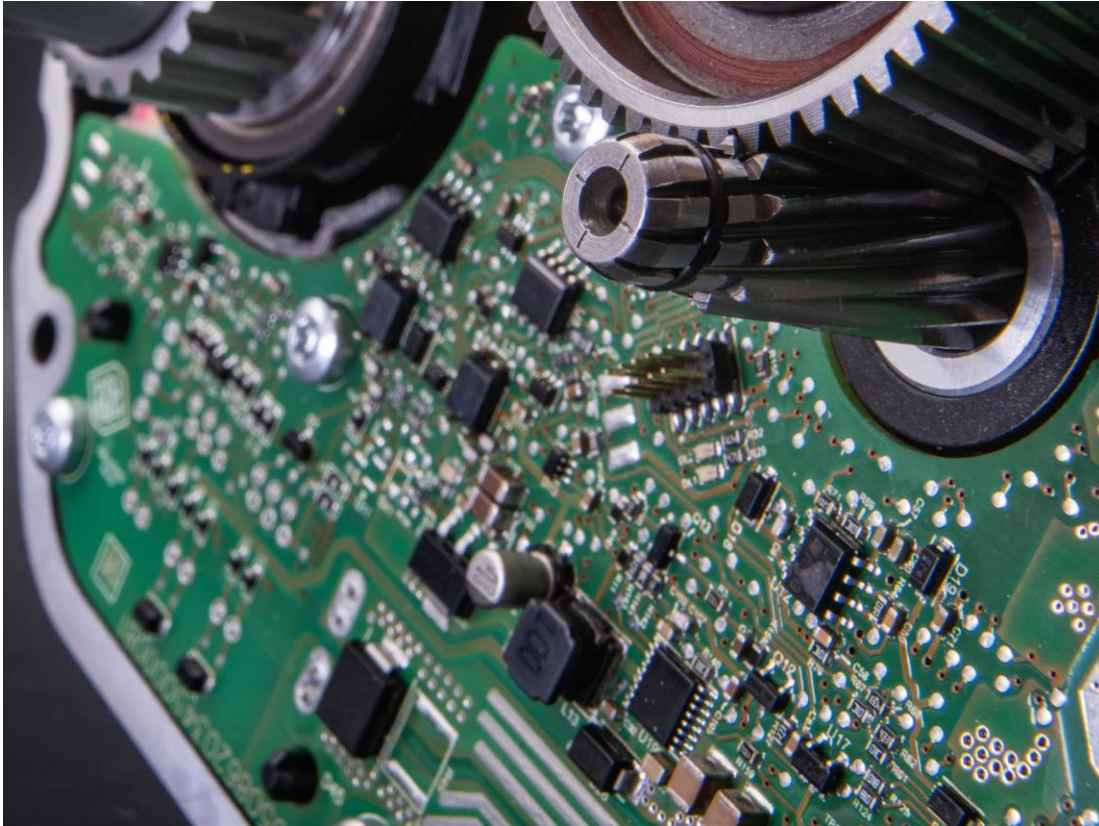
To make life easier to every brands, we **designed the mounting pattern in order to be compatible with the two most diffused standard**.

# EDGE - Details





# EDGE - Electronics



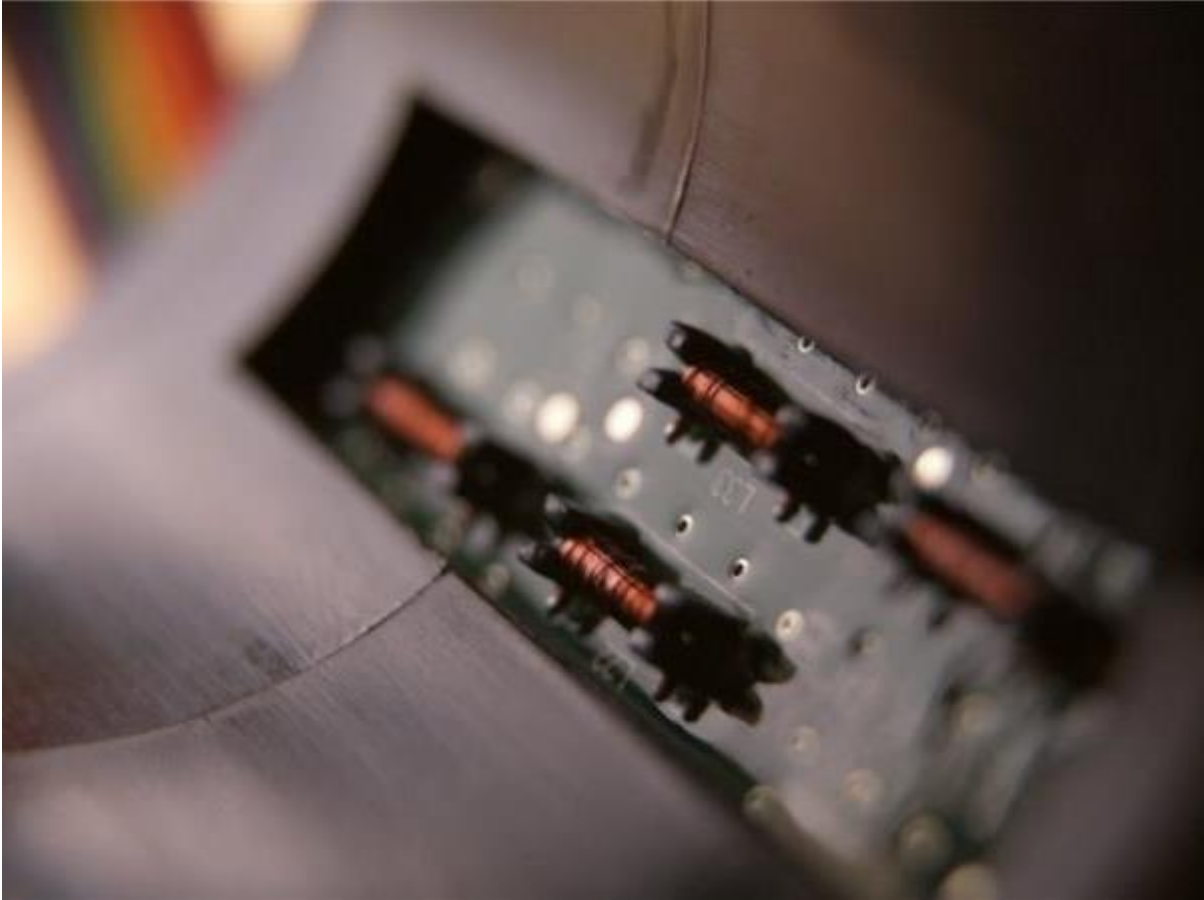
We developed the EDGE around the most sophisticated electronic management in the industry.

It is called **VECTORIAL LOGIC** and allows a super-refined control of the behaviour of the motor.

So that we can develop custom maps and configurations for every need



# EDGE – Torque sensor



The secret behind the **smooth power delivery** and immediate reaction to rider's inputs, is our unique **torque sensor**.

It measures torque **twice as much as any other competitor**. This gives an unparalleled resolution on rider's behaviours

# EDGE - Connectors



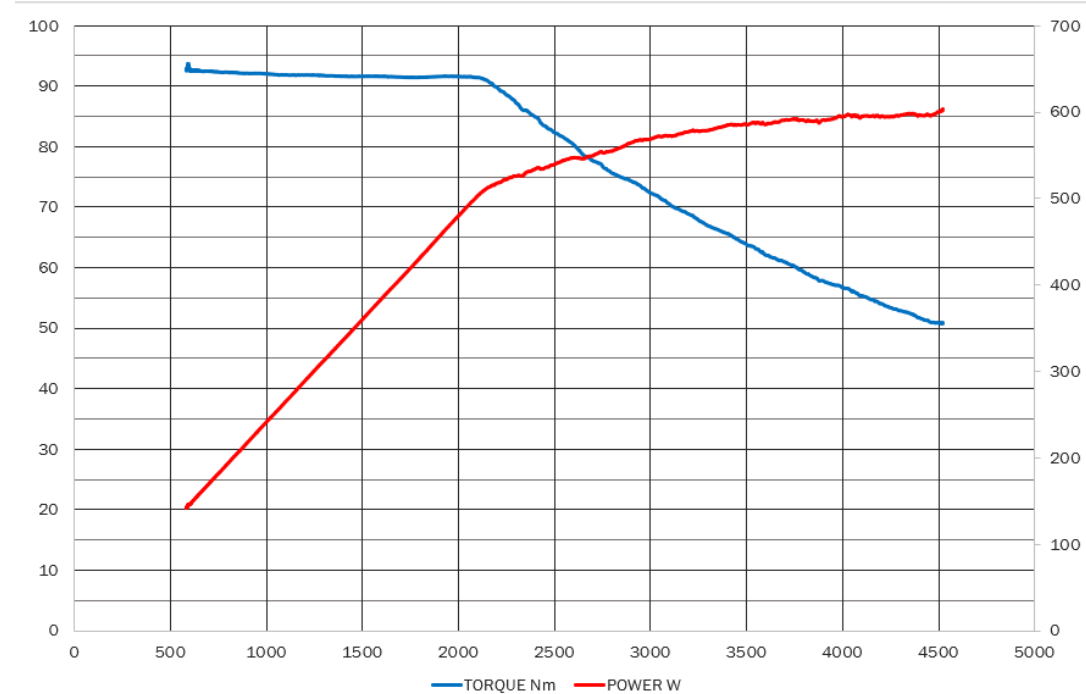
Great attention has been given to cables and connectors.

We know how important it is to have **stable and reliable plugs**. This is why all connectors are automotive-standard level.

In particular, **between battery and motor**, the connection must be extremely **solid and reliable**.

This is why we decided to design our proprietary battery connector to the motor.

# EDGE – Electric motor performances



Testing various competitors we understood that **torque is important**, but **power at high rpm** is what gives the rider that “**endless push**” effect very much appreciated by sportive bikers in the most demanding situations.

We designed and developed the electric motor to **push 90Nm peak torque**, but we very much focused on the **power curve that keeps increasing** well above 110rpm

# EDGE - Builds



We can't disclose bikes that will be equipped with the EDGE because our partners did not present them to the public yet, but we are very excited for what will come out soon. We are proud of the work our customers have done to valorise our new performant drive-unit and we can't wait to share them. Meanwhile, you can take a look to the build we have made for EUROBIKE 2021!





eBike Systems

# USER'S INTERFACES

# USER'S INTERFACES – High Vision



## GENERAL CHARACTERISTICS

- Two pieces design
- The thinnest and most ergonomic controller in the industry
- Gorilla Glass®
- Twilight sensor: automatically trims brightness, manages lights and turns to dark mode
- Integrated air thermometer for motor's management

[PLAY VIDEO](#)  YouTube

## SHOWN INFORMATIONS

- Current speed
- Assistance level
- Battery's charge
- Trip distance
- Trip Time
- Avg. battery consumption (Wh/Km)
- Odometer
- Light management (on/off/auto)
- Cadence
- Burnt calories
- Rider's power input
- Motor's power output
- Walk mode

# USER'S INTERFACES – Side Vision



## GENERAL CHARACTERISTICS

- Fully integrated design: display and controls buttons all in one compact component
- Integrated air thermometer for motor's management
- OLI's family feeling

## SHOWN INFORMATIONS

- Current speed
- Assistance level
- Battery's charge
- Trip distance
- Trip Time
- Avg. battery consumption (Wh/Km)
- Odometer
- Light management (on/off)
- Walk mode

# USER'S INTERFACES – Matrix



Simple and functional.

## SHOWN INFORMATIONS

- Battery indicator
- Assistance-level
- Speed
- Odometer
- Trip time
- Trip distance
- Lights management (on/off)
- Backlight function





eBike Systems

# BATTERIES

# BATTERIES



We strategically partner-up with the main eBike battery pack manufacturers to ensure the highest flexibility to our partners.

Some of the brands we are working with:

- Phylion
- Greenway
- Spard
- Simplo
- Darfon
- BMZ
- Accuvision
- Akkupower

For those who prefer to purchase the entire system from us, we selected some solutions to cover most diffused needs and applications:

- 370Wh semi-integrated design
- 500Wh integrated design
- 630Wh integrated design
- 720Wh integrated design



eBike Systems

SERVICE



# TRAININGS FOR DEALERS AND MECHANICS



# TRAININGS FOR DEALERS AND MECHANICS

OLI eBike Systems has launched an online training program to support dealers.

We trained more 200 people in less than 3 months.

Training sessions are organized in collaboration with BRANDS.

Trained dealers can purchase a FIRST AID KIT that contains all small spare parts for easy-fixes, programming cable and specific tools

The image displays two side-by-side screenshots of a Zoom meeting titled "Corso di Formazione OLI eBike Systems".

**Left Screenshot:** The main window shows a "Submit a request" form with fields for "Serial Number", "Subject", "Description", "E-bike Model", "Error code known (if any)", "Send the error code displayed on screen", "Pick-up time", "Morning/Afternoon/Evening/Not sure", and "Attachments". A "Submit" button is at the bottom. The right sidebar shows a video feed of two men, Luca Fabbri and another participant, both wearing masks. The bottom of the screen shows a chat window with a "G" icon, a "+14" indicator, and a "LA" icon.

**Right Screenshot:** The main window displays a presentation slide titled "OLI SPORT PLUS". The slide features the OLI eBike Systems logo, a photo of a black e-bike motor, and two graphs. The left graph shows "M in W" (torque in Watts) vs "RPM" (pedal revolutions per minute) with a yellow callout: "Da 0 a 20 RPM: Potenza massima di 100W". The right graph shows "Potenza meccanica in Watt" (mechanical power in Watts) vs "RPM pedalate al minuto" (pedal revolutions per minute) with a yellow callout: "Da 20 a 60 RPM: Potenza ai massimi livelli". A legend lists the components: OLI eBike, Borese (Borese), Bosch PI, CX, Shimano Steps E8000, Bafang, and Yamaha PW-X. The right sidebar shows the same video feed of Luca Fabbri and the other participant. The bottom of the screen shows the same chat window.

# SERVICE CENTERS AROUND EUROPE





