

Setup Guide - Assembly Information

Your bike will arrive in 3 boxes. **Box 1 = Bike frame & rear wheel, Box 2 = front wheel, Box 3 = battery**

STEP 1



Contents of largest box

STEP 2

Adjust to height required

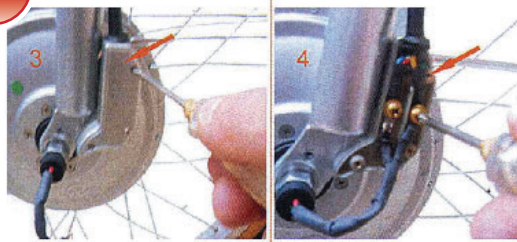


Tighten using 6mm Allen Key

Fitting the handle bars

STEP 3

After fitting front wheel remove cover on front right hand forks and connect motor wires (red to red) connect mudguard stay.



Replace cover

Connect motor wires

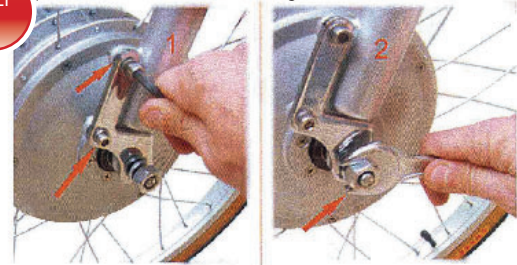
STEP 4



Connect front brake

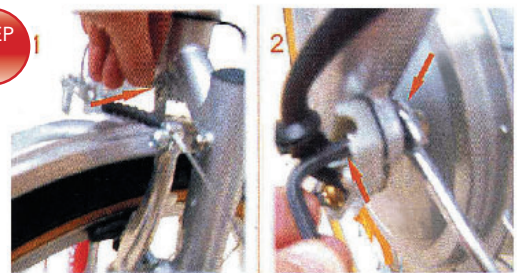
STEP 5

Fit chrome bracket & mudguard stay using 5mm Allen Key. Bolts provided on left hand front forks. Tighten wheel nuts both sides.



The black angle bracket is a wire protector & fits on the right hand axle.

STEP 6



Tighten brake bracket

Shows mudguard stay

to include mudguard fixing lug

on right hand side of forks

STEP 7



Plug battery in before attaching to bike

STEP 8



After checking all nuts and bolts are tight your bike is ready to ride

*NB - This is a guide only. Your dealer has a pre-delivery inspection procedure that should be carried out before the bike is used.